

VESSEL: _____

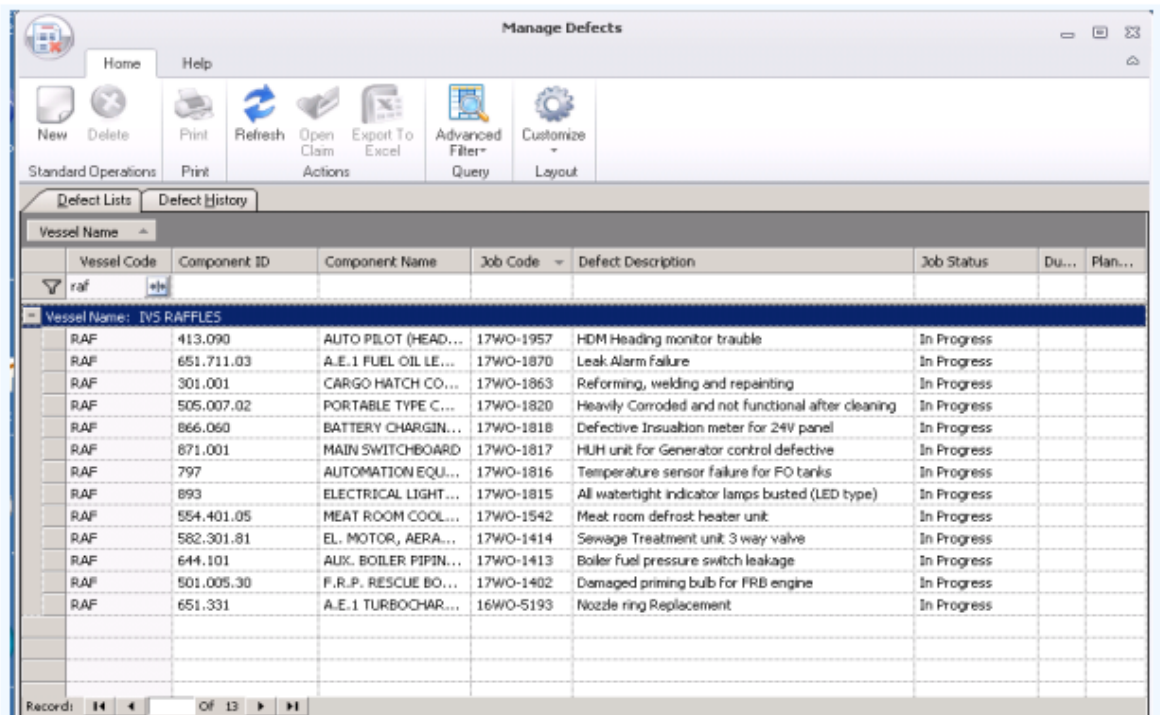
DATE: _____

Details of Training: BASSnet Maintenance – How to report Defects in BASSnet

The Defects sub module enables you to see all defects that have been reported for your components across all your Vessels. Defect records are automatically listed in this sub module whenever you create a Job with the Job Type of 'Defects'.

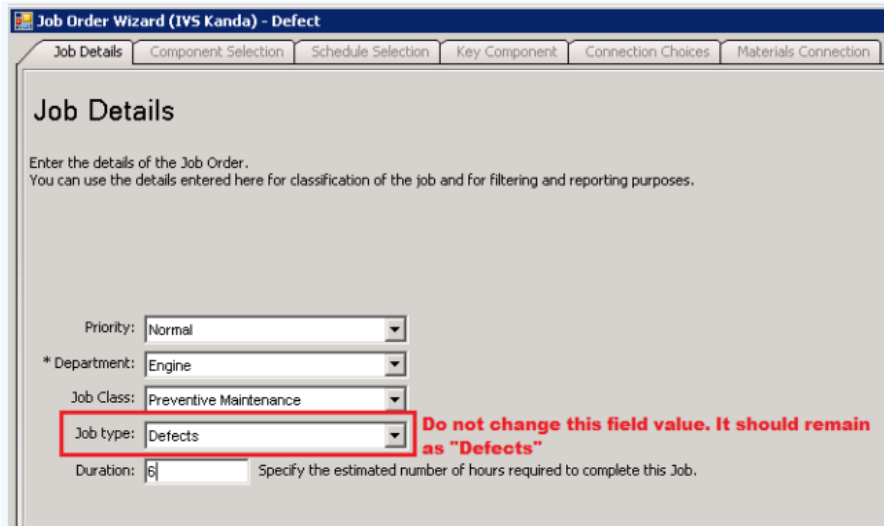
Reporting New Defects in BASSnet

- Under the Maintenance module, click Defects Management under Maintenance. The Manage Defects screen is displayed.



Vessel Code	Component ID	Component Name	Job Code	Defect Description	Job Status	Du...	Plan...
RAF	413.090	AUTO PILOT (HEAD...	17WO-1957	HDM Heading monitor trouble	In Progress		
RAF	651.711.03	A.E.1 FUEL OIL LE...	17WO-1870	Leak Alarm failure	In Progress		
RAF	301.001	CARGO HATCH CO...	17WO-1863	Reforming, welding and repainting	In Progress		
RAF	505.007.02	PORTABLE TYPE C...	17WO-1820	Heavily Corroded and not functional after cleaning	In Progress		
RAF	866.060	BATTERY CHARGIN...	17WO-1818	Defective Insulation meter for 24V panel	In Progress		
RAF	871.001	MAIN SWITCHBOARD	17WO-1817	HUH unit for Generator control defective	In Progress		
RAF	797	AUTOMATION EQU...	17WO-1816	Temperature sensor failure for FO tanks	In Progress		
RAF	893	ELECTRICAL LIGHT...	17WO-1815	All watertight indicator lamps busted (LED type)	In Progress		
RAF	584.401.05	MEAT ROOM COOL...	17WO-1542	Meat room defrost heater unit	In Progress		
RAF	582.301.81	EL. MOTOR, AERA...	17WO-1414	Sewage Treatment unit 3 way valve	In Progress		
RAF	644.101	AUX. BOILER PIPIN...	17WO-1413	Boiler fuel pressure switch leakage	In Progress		
RAF	501.005.30	F.R.P. RESCUE BO...	17WO-1402	Damaged priming bulb for FRB engine	In Progress		
RAF	651.331	A.E.1 TURBOCHAR...	16WO-5193	Nozzle ring Replacement	In Progress		

- Click New. The Job Order Wizard is displayed.



Job Order Wizard (IVS Kanda) - Defect

Job Details | Component Selection | Schedule Selection | Key Component | Connection Choices | Materials Connection

Job Details

Enter the details of the Job Order.
You can use the details entered here for classification of the job and for filtering and reporting purposes.

Priority: Normal

* Department: Engine

Job Class: Preventive Maintenance

Job type: Defects Do not change this field value. It should remain as "Defects"

Duration: 6 Specify the estimated number of hours required to complete this Job.

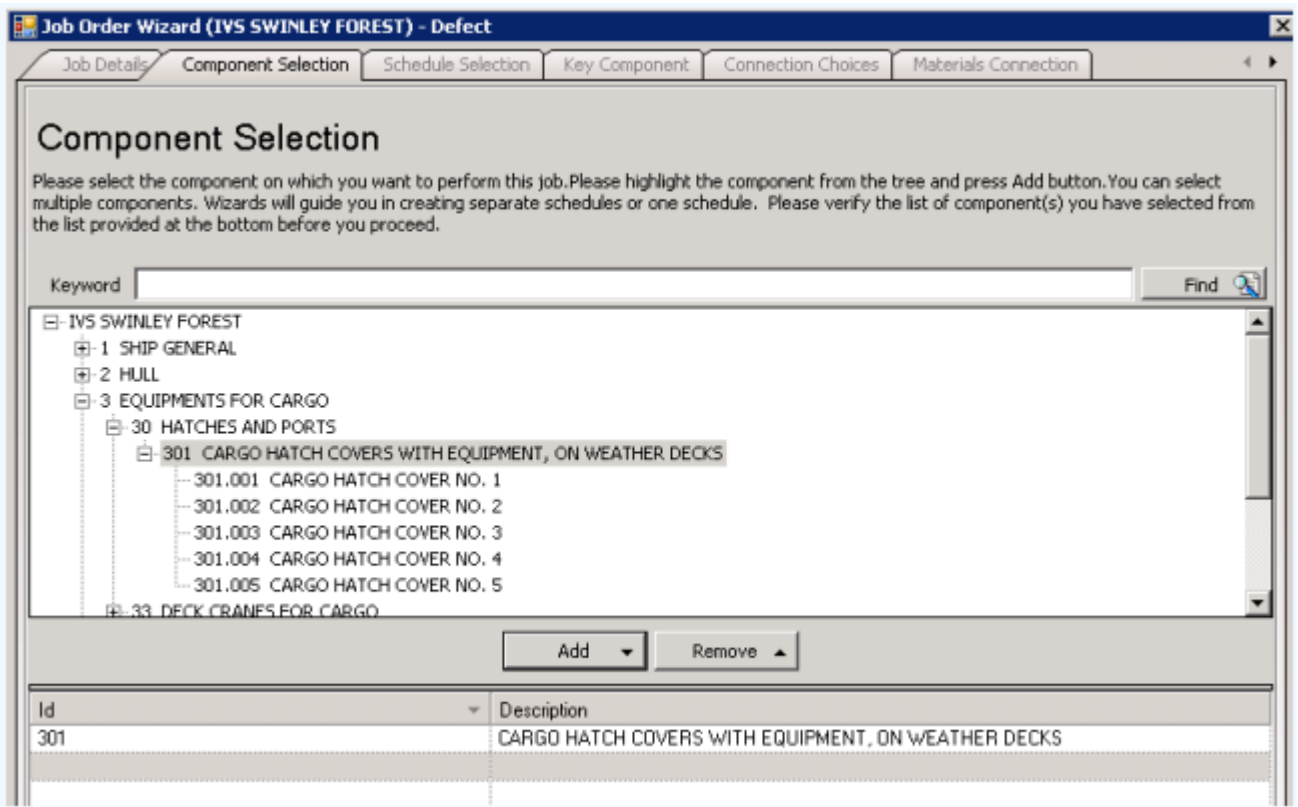
- On the Job Details screen, you can specify the following information

On the Job Details screen, you can specify the following information:

Field	Description
Priority	Specify the priority level of the job, for instance, critical or Normal
Department	The department responsible for this job.
Job Class	Use the available drop down list to select the classification of the job, e.g. Preventive Maintenance
Job Type	The Job Type of 'Defects' will be automatically selected. To ensure that this Job will be listed under the Defects sub module, you must maintain the selection as 'Defects'.
Duration	Specify the duration (in hours) of the job

- Click **Next**. The **Component Selection** screen is displayed.

You will now need to select the component on which this defect correction job is to be performed. Select the appropriate Component. Make your selection from the tree structure and click **Add**. To remove a component you have selected, click **Remove**. Selected components will be displayed at the bottom-half of the screen. Please verify that you have selected the correct components before




Job Order Wizard (IVS SWINLEY FOREST) - Defect

Job Details | **Component Selection** | Schedule Selection | Key Component | Connection Choices | Materials Connection

Component Selection

Please select the component on which you want to perform this job. Please highlight the component from the tree and press Add button. You can select multiple components. Wizards will guide you in creating separate schedules or one schedule. Please verify the list of component(s) you have selected from the list provided at the bottom before you proceed.

Keyword Find 

- IVS SWINLEY FOREST
 - 1 SHIP GENERAL
 - 2 HULL
 - 3 EQUIPMENTS FOR CARGO
 - 30 HATCHES AND PORTS
 - 301 CARGO HATCH COVERS WITH EQUIPMENT, ON WEATHER DECKS**
 - 301.001 CARGO HATCH COVER NO. 1
 - 301.002 CARGO HATCH COVER NO. 2
 - 301.003 CARGO HATCH COVER NO. 3
 - 301.004 CARGO HATCH COVER NO. 4
 - 301.005 CARGO HATCH COVER NO. 5
 - 33 DECK CRANES FOR CARGO


Add Remove

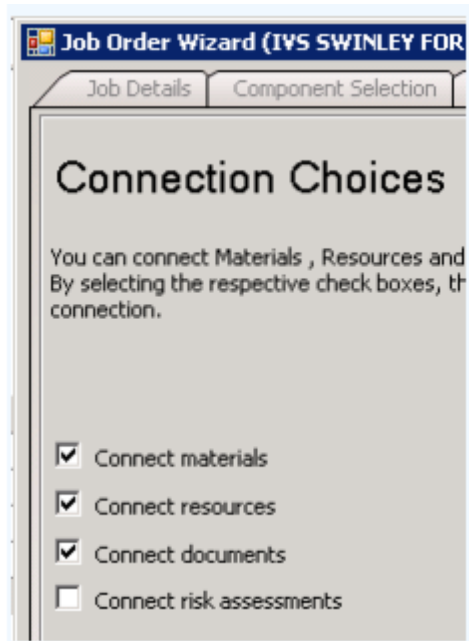
Id	Description
301	CARGO HATCH COVERS WITH EQUIPMENT, ON WEATHER DECKS

proceeding

- Click Next. The Connection Choices screen is displayed.

You can now decide if you would like to connect materials, resources or documents to this job. Selecting the respective check boxes will display the relevant screens where you can perform this connection. Click Next

	<p>HEALTH, SAFETY, ENVIRONMENT AND QUALITY MANAGEMENT SYSTEM</p> <p>34.0 BASSNET MAINTENANCE – REPORTING DEFECTS IN BASSNET</p> <p>ON THE JOB TRAINING</p>	<p>OJT : 034 Page 3 of 6 Date : 07-Nov-25 Rev : 10.1 Appr : DPA</p>
--	---	---



- If you have selected to connect **Materials**:

The **Materials Connection** screen will be displayed allowing you to specify the materials that are required to perform this job. Select the **Material Category** from the drop down list.

Select the required material in the **Material Lookup** window. Highlight the material/s from the Lookup list and click Select to confirm. Now, use the **Est. Qty** column to specify the required quantity of each material that is required to perform this job

Job Order Wizard (MT Asian Feeder) - Defect

Materials Connection

Please select the Materials needed to perform this job and enter the Estimated Quantity required. Click 'Connect' to look up materials in the system and use the search filters to narrow your search.

Material category: Spare Parts ☐ All Materials ☐ Materials linked to Components

Mand.	Opt.	Est. Qty.	ID	Name	Group	Sub-Group	Maker	Maker's No	Drawing No	Stock	Account
<input type="checkbox"/>	<input checked="" type="checkbox"/>	.0000	351.11/...	Bolt Hexagon			Frank M...	A41588	0363-1685-1	10.0...	325035
<input type="checkbox"/>	<input checked="" type="checkbox"/>	.0000	351.11/...	Bracket for J			Frank M...	A40128	0363-1685-1	10.0...	325035
<input checked="" type="checkbox"/>	<input type="checkbox"/>	.0000	351.11/...	Cap Dust			Frank M...	A31258	0321-0295-2	8.0000	325035
<input checked="" type="checkbox"/>	<input checked="" type="checkbox"/>	.0000	351.11/...	Coupling Flexible			Frank M...	A33011	0363-1642-1	6.0000	325035

Record: 4 of 4

- If you have selected to connect **Resources**:

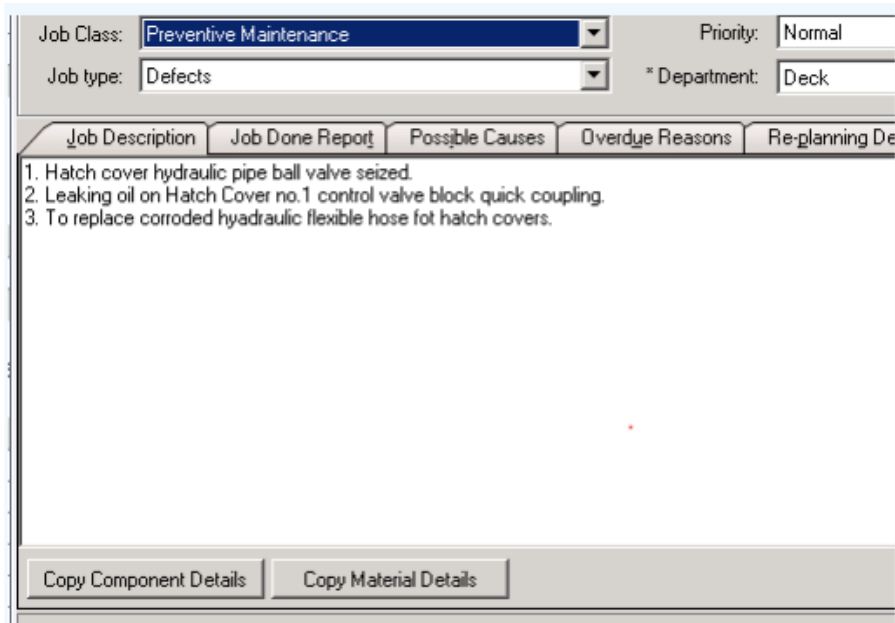
The Resources Connection screen will be displayed allowing you to specify the resources that are required to perform this job. Use the Est hrs column to specify the estimated hours required to perform the job for each resource listed. Click Next.

- If you have selected to connect **Documents**:

The Documents Connection screen will be displayed allowing you to attach documents that can be used as reference when carrying out this job. Click Connect to launch the Document Manager. Browse through the folder structure and locate the document that you would like to connect and then click Connect.

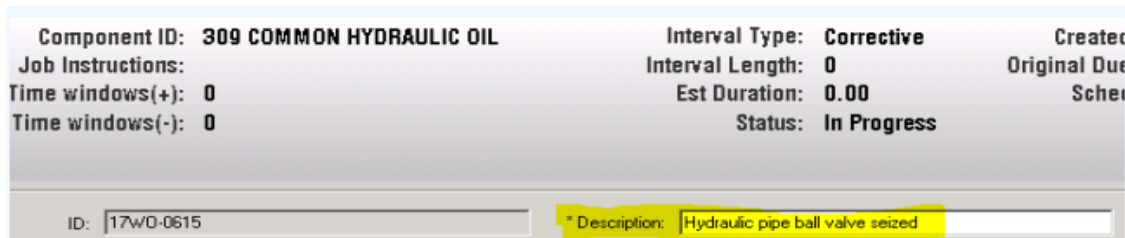
Click Next

- The **Job Description** screen is displayed. Here, describe in detail the DEFECT and how the job is to be carried out to rectify it. Also we can put in reference to Requisition raised for spares.



Click Next to proceed

- The **Name The Job** screen is displayed. Here, enter a short description to identify this job. It is important to have a proper naming convention as it makes it easier to search for this job in the system at a later time.



Click **Next** to proceed.

- The **Done** screen is displayed indicating that you have completed all the necessary information to create this Defect job order. Click **Done** to finish.
- The Job will now be listed on the **Manage Defects** screen.

Closing the Defect after it is rectified.

- Go to the Manage Defects screen and open the defect that has been rectified.
- Click on “Report job done” icon from the top.
- Complete the job report describing what was done and click NEXT and fill in all the information in the subsequent tabs as required.
- The process is same as Reporting a Scheduled job order in Maintenance.

- Shift it to history once it is completed.
- It will now appear in the Defects History.

Above has been read and understood:

CO	_____
2O	_____
3O	_____
CEO	_____
2EO	_____
3EO	_____
4EO	_____

Verified by: Master _____

Feedback: